

Suspended sign

Vista Sharp series



Vista Sharp's flat designed double sided hanging sign is based on Sharp's standard double sided profile and specially designed connectors that are also cable clamps.

Dimensions:

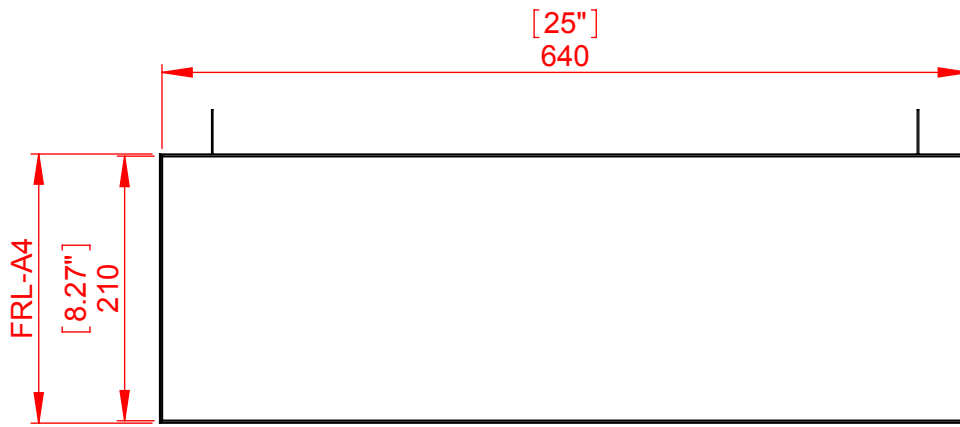
Vista Sharp sign frames are offered in 13 different widths:

4.14", 5.83", 8.27", 8.5", 11", 11.69", 14", 15.75", 16.54", 17", 19.68", 22", 23.62"

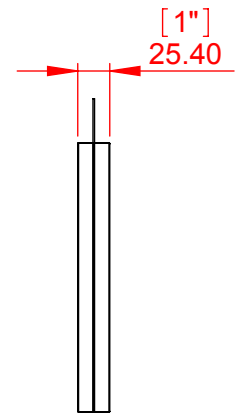
(FRL-A6, FRL-A5, FRL-A4, FRL-Letter, FRL11, FRL-A3, FRL14, FRL-400, FRL-420, FRL-17, FRL500, FRL22, FRL600 (mm))

Length: 16"-40" (400 mm – 1000 mm)

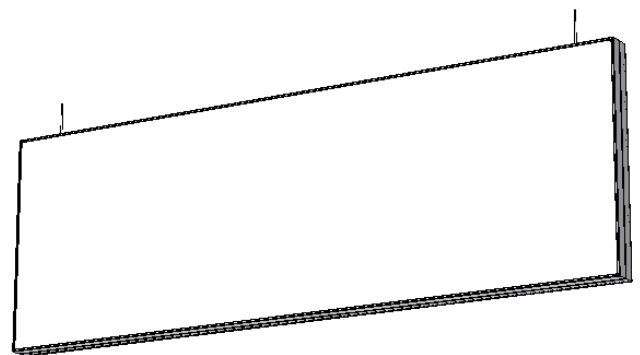
Custom lengths are available.



Front view



Side view



Isometric view



Product Series	Sharp system	Designer: R.C
Model	Suspended Sharp style A4x640 size	Date: 13/12/2016
Part Number	SUSS4E11	Scale: 1:6
Drawing Number	VSH.31	Measurements in millimeters Do not scale drawing

Proprietary and confidential: The information contained in this drawing is the sole property of Vista system Limited. Any reproduction; copying; distribution or any other use in part or as a whole without the written permission of Vista system Limited is prohibited. This ban includes any use by any third party that did not receive this information from Vista system Limited.